



COMUNE DI SOVICILLE

Provincia di Siena

Indagine geologica di supporto alla redazione del PIANO STRUTTURALE

Sindaco
Alessandro Masi

Progetto:

Geologo:
Dott. Geol. Massimo Marrocchesi

Geologi collaboratori:
Dott. Geol. Tommaso Pratesi
Dott. Geol. Alessandro Ferrucci
Dott. Geol. Silvia Terzuoli
Dott. Geol. Mario M. La Salvia

Progettista:
Dott. Arch. Giovanni Maffei Cardellini

Consulente legale:
Avv. Luana Garzia

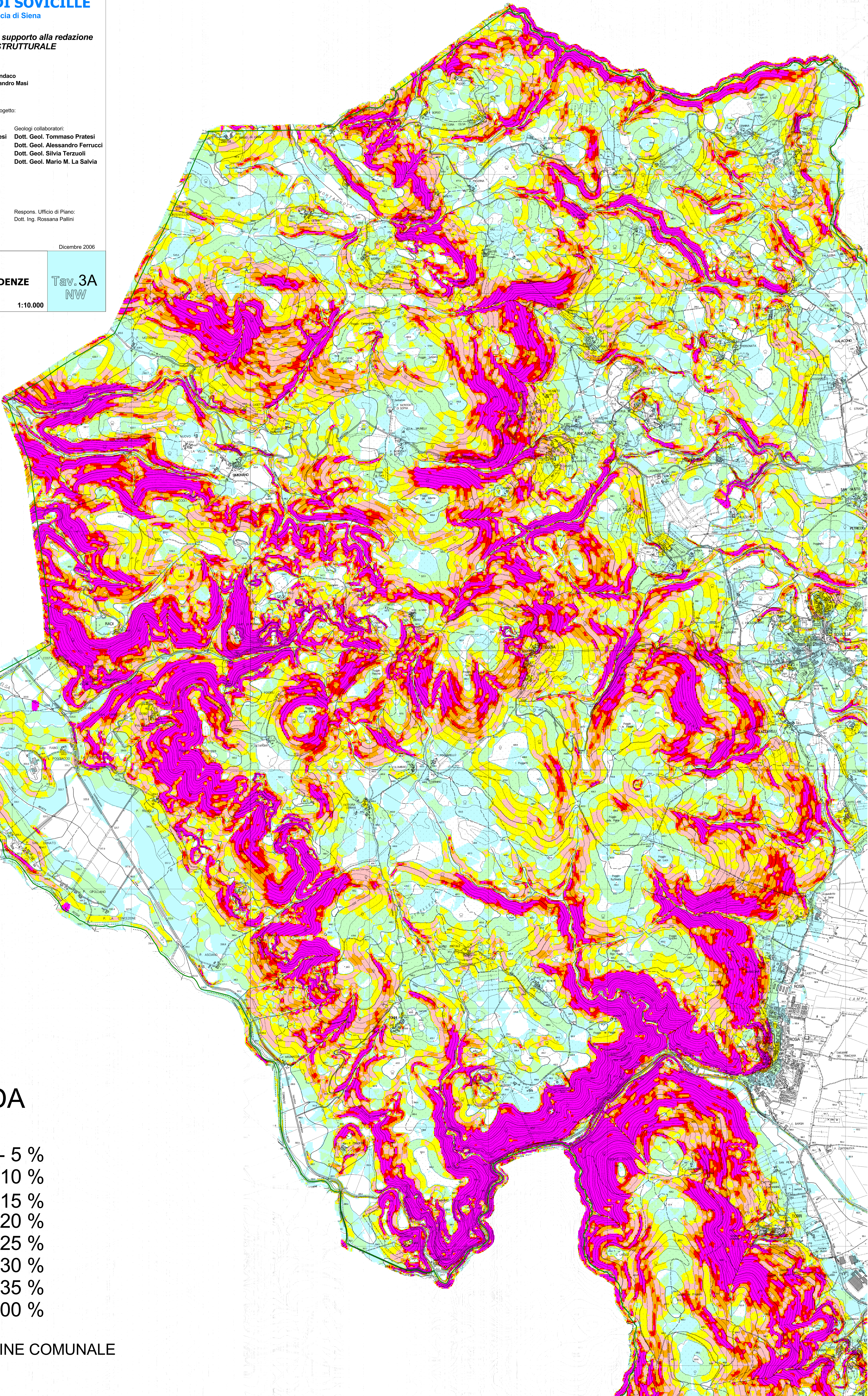
Respons. Ufficio di Piano:
Dott. Ing. Rossana Pallini

Dicembre 2006

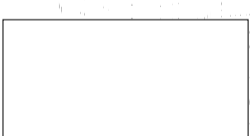
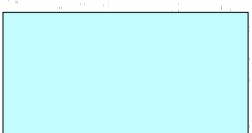
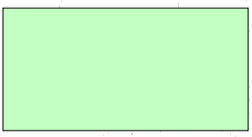
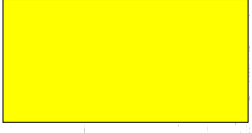




CARTA DELLE PENDENZE

Tav. 3A
NW

1:10.000



LEGENDA

-  0 - 5 %
-  5 - 10 %
-  10 - 15 %
-  15 - 20 %
-  20 - 25 %
-  25 - 30 %
-  30 - 35 %
-  35 - 100 %

 CONFINE COMUNALE